

SUSPENSION MOUNTING FRAME

EV3
EV4
EV5



EV3



EV4



EV5

Application

For open and closed tanks (not gastight)

Technical data

All OPTIMIX version applicable

Horizontal adjustment up to $\pm 60^\circ$

EV3: Cable guidance on the rope, optional on the mast

EV4: Cable guidance on the rope

EV5: Cable guidance on the mast, optional on the rope
At smell emissions

Gallow, base frame and wall support in ss304

Mast: 100 x 100 / 120 x 120 / 150 x 150 mm ss304

Rope winch galvanized (max. strain relief 650 or 1200 kg)
with ss316 rope \varnothing 8 mm

Optional: Rope winch in ss304 (max. strain relief 900 kg)

EV3

Doweling of the wall support in the inside tank wall
4-12 m tank height

EV4

Doweling of the wall support in the outside tank wall
4-12 m tank height

EV5

Doweling of the wall support on the inside tank wall.
Doweling of the gallow holder on the outside tank wall
4-12 m tank height

Other tank heights on request

Accessories (optional)

Height indication to determine the exact tank height of the agitator within the tank



بیسمارا اینترن پارکس

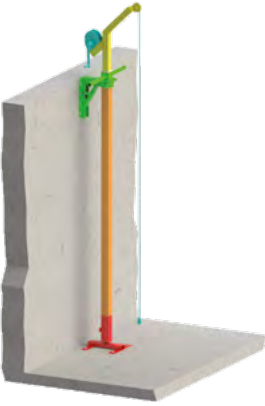
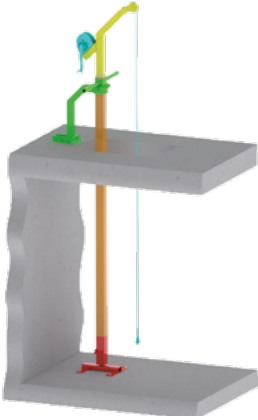
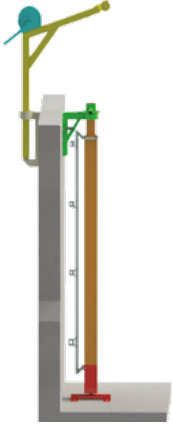
نمایندگی ایران

تلفن تماس: ۸ و ۸۸۳۲۴۹۳۷ - ۲۱

E-mail : sales@brp.co.ir

SUSPENSION MOUNTING FRAME

EV3
EV4
EV5

Suspension mounting frame EV3 / EV4 / EV5		
EV3	EV4	EV5
		
Wall support with pvc-socket and swivel arm	Suspension bracket on the ceiling with pvc-socket and swivel arm	Wall support with pvc-socket and swivel arm
Gallow 100s	Gallow 100s	Gallow and wall support with pvc-socket on the outside

Note: 650s, 1200s and 900s rope winch possible on the EV5-gallow

Subject to technical changes



بسمارک پارس

نمایندگی ایران

تلفن تماس : ۸ و ۸۸۳۲۴۹۳۷ - ۰۲۱

E-mail : sales@brp.co.ir

SUSPENSION MOUNTING FRAME EV3 LIGHT



Application

Suspension mounting frame for open concrete tanks
(not gastight)
Doweling of the wall support in the inside tank wall
Up to 7 m tank height

Technical data

Suitable for:
OPTIMIX 2A 8-720 / 2A 15-720 / 2A 22-720
Horizontal adjustment up to $\pm 60^\circ$
Base frame and wall support in ss304
Mast:
60 x 60 mm in ss316 (max. 4 m length)
80 x 80 mm in ss304 or ss316 (max 7 m length)
Rope winch in ss304 (max. strain relief 250 kg)
Optional: Rope winch in ss304 (max. strain relief 900 kg)
ss316 rope \varnothing 6 mm



بینارازین پارس

نماینده گی ایران

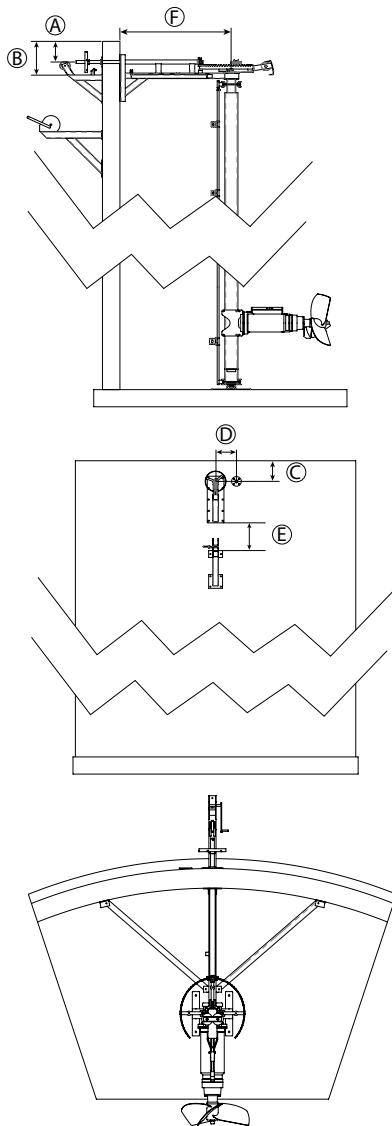
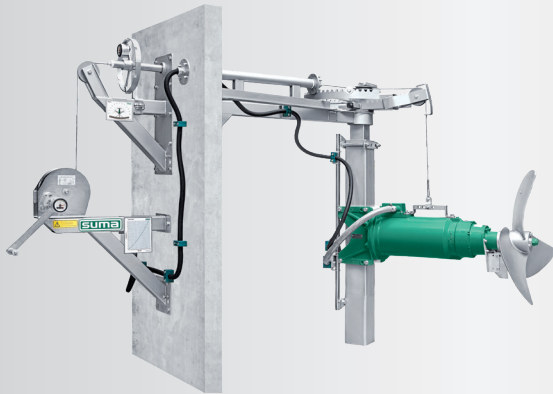
تلفن تماس : ۸ و ۸۸۳۲۴۹۳۷ - ۰۲۱

E-mail : sales@brp.co.ir



MGD

MAST GASTIGHT WALL LEAD THROUGH



Application

Mounting system for use in a concrete tank with heights up to 14 m.

Construction

Guide mast 100 x 100 / 120 x 120 / 150 x 150 mm ss316
ss304-cable winch cable in ss316 (max. tension 900 kg)
Cable guidance behind the mast

Optional:

Height indication - to determine the exact height of the agitator within the tank

Angle display - to determine the exact angle of the agitator within the tank

Benefits

- Easy to install
- Safe to operate submersible agitator
- High durability construction
- Mixer turnable left/right (total 210°) at any height

Dimensions

Type	A [mm]	B [mm]	C [mm]	D [mm]	E [mm]	F [mm]
MGD	300	490	300	300	var.	1,215

Subject to technical changes



بیسارایزن پارس

نمایندگی ایران

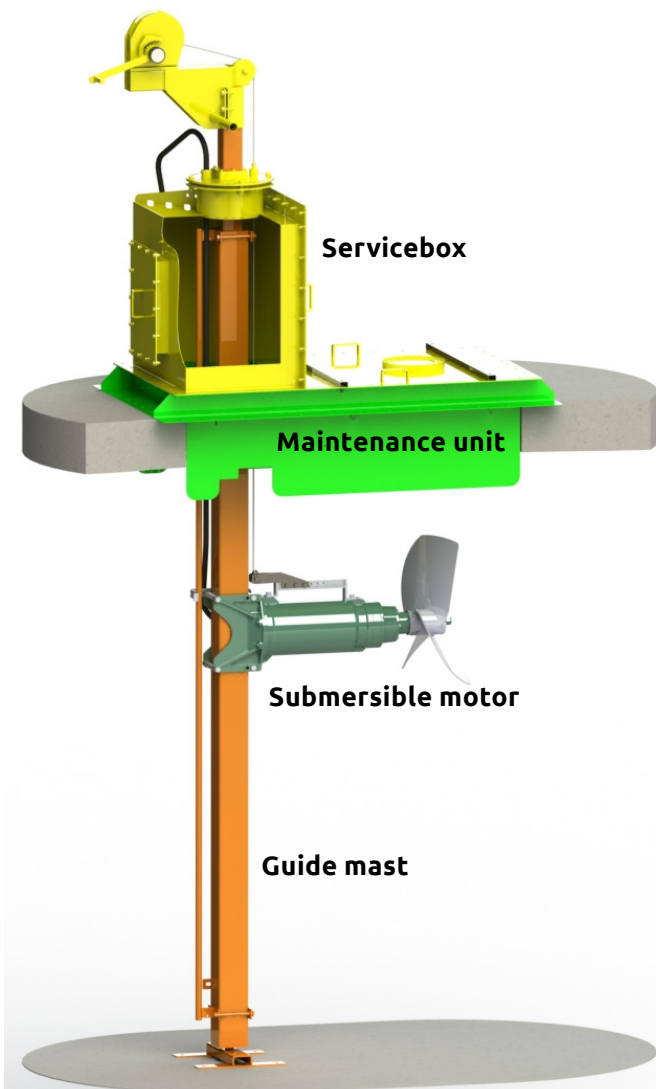
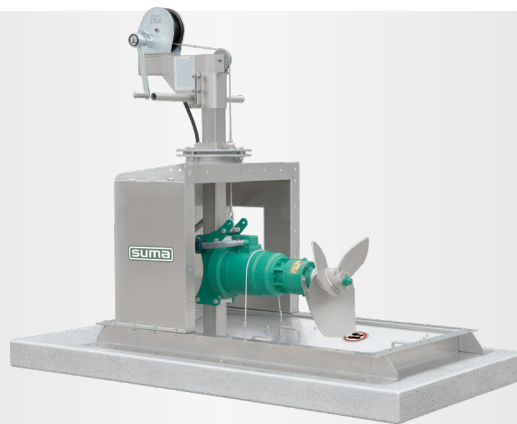
As per: 2019-10

تلفن تماس: ۸ و ۰۲۱ - ۸۸۳۲۴۹۳۷

© SUMA Rührtechnik GmbH | Martinszeller Str. 21 | DE-87477 Sulzberg
Phone: +49 8376 / 92131 - 0 | Fax: - 19 | info@suma.de | www.suma.de/en

GDD

GASTIGHT CEILING LEAD THROUGH



Application

Gas tight concrete ceiling lead through for tanks up to 14 m (Fermenter, secondary fermenter, end storage) with concrete ceiling (other heights on request)

Gas pressure 50 mbar (higher pressures on request)

For all OPTIMIX series applicable

Service box

Mounting directly on concrete ceiling (flatness 3 mm) or on base frame of maintenance unit

Tank opening 1,700 x 900 mm (other opening sizes on request)

Sealing plate ss316 1,870 x 1,070 x 3 mm

Sight glass with wiper and flushing Ø 300 mm

Lateral adjustment 360°

Gas tight sealing: PVC sealing package, o-rings, grease ss304-rope winch with 8 mm rope (tensile load 900 kg)

Unit

Service box

Maintenance unit

Submersible motor

Guide mast

Maintenance unit (Option)

Base frame 2,030 x 1,230 x 3 mm, ss316

Maintenance flap for closing the tank during service and maintenance work

Greater dimensions for bigger tank openings on request

Maintenance position

Base frame (2.0 x 1.2 m) with maintenance flap for closing the tank (nearly gas tight)

Guide mast with ss316-rope

Mast: 100 x 100 / 120 x 120 / 150 x 150 mm ss316

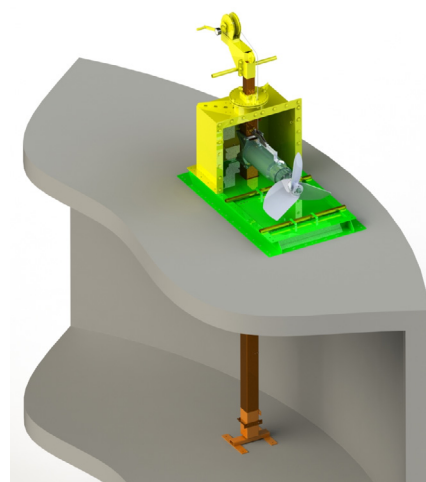
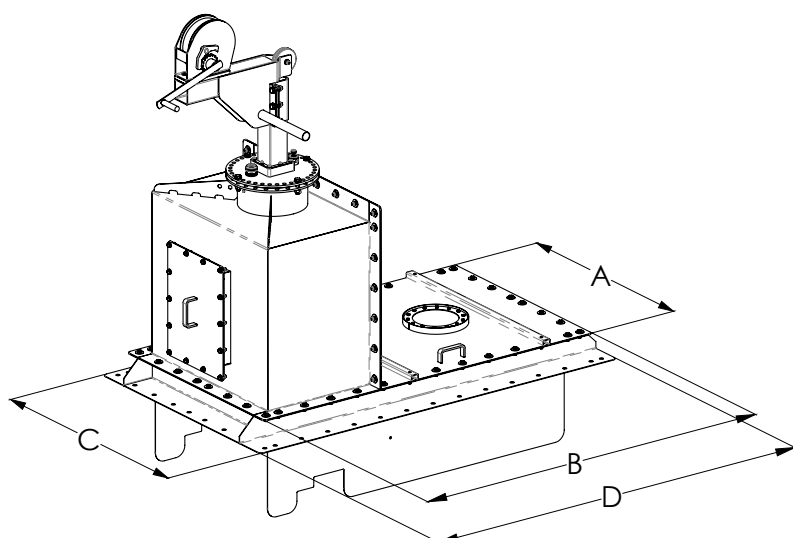
Rope and cable guide behind the mast

Height indication

For indication of the exact agitator height in the tank.

Mounted on the rope winch and readable from the outside.

GDD GASTIGHT CEILING LEAD THROUGH



Dimensions

Description	A [mm]	B [mm]	C [mm]	D [mm]	Opening width [mm]	Opening length [mm]	Flatness concrete [mm]
Servicebox (sealing plate)	1,070	1,870			900	1,700	3
Option: Maintenance unit (box with cover)			1,230	2,030			

Subject to technical changes



نمایندگی ایران

تلفن تماس : ۸ و ۸۸۳۲۴۹۳۷ - ۰۲۱

E-mail : sales@brp.co.ir